

HAWAAN FOREST ESTATE



INSIDE

HAWAAN FOREST ESTATE

- Properties under Construction & Vacant
- Accredited Architects
- Garden Maintenance
- My Estate Life App
- Updates: Electrical
Website
Maintenance
- The Conservation Trust



COMMUNICATION TO THE HOA & SECURITY OFFICES

estatemanager@hawaanhoa.co.za
reception@hawaanhoa.co.z
security@hawaanhoa.co.za

Tell us what you would like to hear in the
next addition

Tel: 031 561 3515
SMS Number: 060 571 7552

UNDER CONSTRUCTION AND VACANT PROPERTIES



Twenty vacant sites remain on the Estate, of which we have one developer site left.

Some of the vacant properties are currently for sale. Residents are welcome to send us an email to enquire further about these.

We have a total of five sites that are currently under construction. Many delays during their building period were caused by Covid- 19 and storage of materials after the unrest in July 2021.



ACCREDITED ARCHITECTS



Kevin Lloyd Architects

Contact number:
031 764 7535

Email :
kevin@kevinlloydarchitects.co.za



Bloc Architects

Contact number:
031 566 3320

Email :
brandon@bloc.archi



Dean Jay Architects

Contact number:
0 31 303 1214

Email:
design@deanjayarchitects.com



Patrick Ferguson Architects

Contact number:
031 564 7984

Email:
admin@fergusonarchitects.co.za



ARCHITECTURE
IS A
VISUAL ART.

**AND THE BUILDINGS
SPEAK FOR THEMSELVES.**

Is your property on Sale ?
Would you like to add your property details to the next edition?

Send us an email with your information and photos.

GARDEN MAINTENANCE

The HOA sets Rules and regulations, essentially designed to protect the Estate and its assets and keep the peace amongst its Residents.

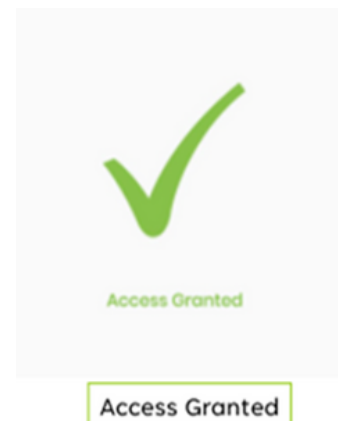
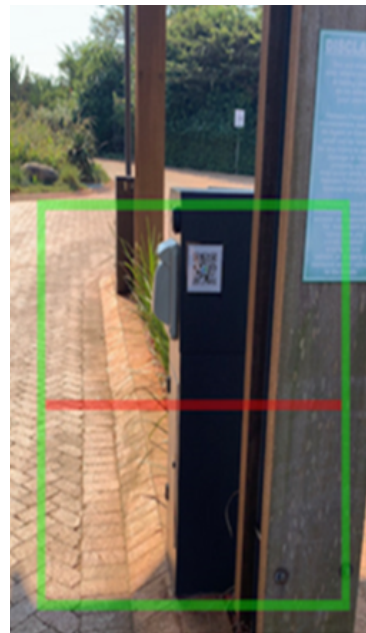
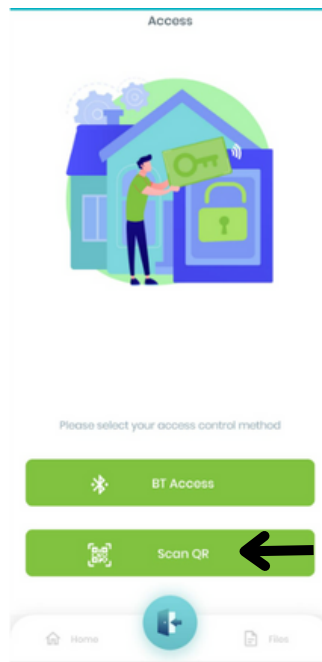
All common area gardens are open spaces as well as around the gate house, islands in roadways, sidewalks (if any), water features, are maintained by the HOA.

However, maintenance of residential gardens and erven (within the member's property) is to be undertaken by the member. We urge all Residents to please ensure their gardens are regularly maintained, as many concerns have been raised with the HOA due to encroachments on neighbouring properties, etc.



MY ESTATE LIFE APP

Alternate option for Residents to enter/exit the Estate.



Ramadan Mubarak to all our Muslim Residents.

We wish you and your family a blessed fast and Eid Mubarak.

HAPPY EASTER !!!

To all Residents celebrating this holiday season.

We wish you a safe and blessed Easter.

HAPPY EASTER

ELECTRICAL

With the aid of an Engineer and Electrician we have upgraded two breakers that were being effected during the Load shedding and glad to advise everything is running smoothly.

Load logging has also been done and with the data received and further fault finding, we can look into a permanent solution to the Electrical concerns for the future of the Estate.



WEBSITE

We have experienced some delays in the progress of the website.

The layout is already in progress and some amazing historically information and images have been retrieved from the previous stakeholders.

There will be a password protected page for Residents interested in sharing their business profiles with other Residents. Kindly inform us via email if you would be interested.

MAINTENANCE

Part 1 of the maintenance at the HOA office, Control Room and Guardhouse areas. High pressure cleaning of these areas have started, slight delays due to the heavy rain.

Part 2 will be the cleaning of the sand stone tiles at the entrance, guardhouse and the boundary walls.

We are in the process of getting quotes to attend to the sand stone tiles that have fallen on on the rear end (facing Herald drive) of the Boundary wall.

Part 3 is the continuation of the wood cladding for the Electrical kiosks.



IMPORTANT UPDATES

LET'S HEAR
FROM

THE CONSERVATION TRUST

Fauna and security monitoring was done by trail cameras, which continue to be well managed by Marshall & A Starke. There have been a couple of beautiful wildlife images captured and fortunately no security issues.

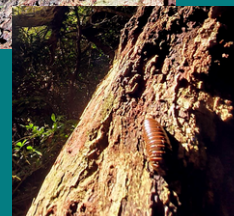
In addition to their monthly routine tasks, the conservation management team have focused clearing *Brachyleana* (Silver Oak) and other invasive herbaceous annuals from the grassland areas.

As growing season peaks (Jan and Feb), observations of annual invasive species have increased. This is because their flowering and seeding time is in Feb/March. Species that are being managed to prevent mass seeding are *Khakibos* and the invasive grass *Rottboellia cochinchinensis*. A *Senecio* species, yet identified, is growing in some of the disturbed grassland sites and will be monitored accordingly.



The grassland and forest pathways have been neatly cut in March.

An unnamed but annual Asteraceae herb has been found growing in abundance in late summer. It appears to be the first year which it has been sighted. Specimens have been collected and have been logged at the SANBI KZN herbarium for formal identification.



Pill-millipedes were noted out and about on the trunk of a large *Ziziphus*. They are usually found on the forest floor where, being deposit-feeders, they filter out organic matter from the sandy layers of soil among the leaf litter.

A forest curcubit creeper, *Coccinia palmata* is in fruit on the Bushshrike trail.

They are very beautiful but their stems will now die off for the rest of summer and emerge again in Spring.

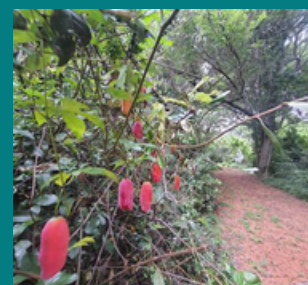


Photo by John Gatherer

CAMERA OBSERVATIONS IN FEBRUARY & MARCH



Photo by John Gatherer

One highlight from February was a Bushbuck male captured at dawn on the interface between the estate and the grassland.



Lemon dove



A pair of Olive-thrush's



Photo by John Gatherer

Highlights from March 2022 include:

Many different forest fauna utilising the water point at the BushShrike junction, including: Blue Duiker; Black Sparrow Hawk; Purple Turaco; and a Wood Owl. The camera on the Bush-Shrike trail also picked up some beautiful images of foraging Banded Mongoose and Crested Guinea fowl.



Blue Duiker



Black Sparrow Hawk



Purple Turaco



Wood Owl



Banded Mongoose



Crested Guinea Fowl