



HAWAAN FOREST ESTATE NEWSLETTER

January 2022 Edition

WISHING ALL RESIDENTS A HAPPY NEW YEAR AND BEST WISHES FOR 2022.
FROM THE HOA MANAGEMENT TEAM

SNAKE SEASON

Snake Season is upon us. Many reports have been made to Security to assist with snake removals. Kindly be reminded that Security is not trained to handle snakes, but will assist where they can.

*Contact number for a professional snake catcher:
Jason Arnold - 082 745 6375*



DSW STAFF

Kind gestures from residents to DSW staff for christmas (funds/ gifts), resulted in disgruntled behaviour. When funds were not given they did not remove the refuse. The matter was raised with the Supervisor for the Umhlanga area, whom advised that the staff are already receiving bonuses. She respectfully requests that Residents reframe giving the staff funds to avoid any further incidents.



FEEDING MONKEYS

3 Reasons why you should not feed Monkeys

1. *They play an important role in maintaining healthy forest ecosystems. They aid the process of seed dispersal as their diet consists majorly of fruits. When habituated feeding leads them out of their natural habitat, it also affects the health of the forests and alters their foraging patterns.*
2. *This directly increases their chances of becoming victims of roadkill by speeding vehicles on roads.*
3. *Rise of incidents of monkeys attacking humans when food is refused to them, directly leading to monkeys being villainized by local communities.*

SPEEDING

Its important to drive carefully and not speed within Hawaan Forest Estate, many concerns include the safety of all Residents, children and the beautiful animals.



UNLICENSED DRIVING



Are you comfortable having unlicensed Contractors/ children driving in this Estate?

In the best interest of the Residents and their families Contractors without a driver's license will not be allowed access.

Parents should not allow their children who are unlicensed to be driving any motorized vehicles unsupervised.



LANDSCAPE MAINTENANCE

Queries and concerns were received regarding the weeding and pruning/ trimming of trees in the common areas. HOA Management recently met with Life Landscape to discuss an action plan for 2022, at which the concerns have been raised and are currently being looked into.

Conduct rules refers to the Maintenance of residential gardens and erven (within the member's property) is to be undertaken by the member in compliance with the Estate landscaping design controls and subject to the reasonable direction of the HOA.

ABUSE TO SECURITY & HOA STAFF

Please remain calm and polite to the HOA and Security staff. All staff are here to assist in the smooth running of the Estate and are given procedures to follow that is in accordance with the Rules.




Staff



MAINTENANCE PHASE 2

Phase 2 of the Maintenance project will be underway within the next month. Quotes have been received and currently being discussed.



ACCESS PROCEDURES

Contractors working at your home can be advised to complete the access applications prior to coming through. This will mitigate the delays for entry. (Access Applications are available on request from the HOA Office). Contractors are not permitted to work on weekends, without prior approval from the HOA Office.

*Remotes or tags are programmed to each Resident respectively and should **NOT** be handed to Contractors/Staff/ Guests.*

When a remote or tag is scanned at the boom gate, only one vehicle should pass. There are sensors that go off once the vehicle has passed and the boom closes. Tailgating is strictly prohibited.

Guests/Visitors are to be loaded on the MEL App, and present their Driver's License upon arrival.

EMERGENCY NUMBERS

Emergency Numbers (Ward 35)

SAPS Emergency Services - 10111

Durban North SAPS - 031 325 6590

Metro Police, Fire, Emergency - 031 361 0000

Rescue Services -Sea (NSRI) - 031 361 8567

Electricity Department - 080 131 3111 /080 311 1111

Water Department - 080 131 3013 /080 311 1111

KZN EMS - 10177

Netcare Ambulance Services - 082 911

Crisis Team - Durban North & Umhlanga - 084 810 4969

Ashburne Vet (open 24hrs) - 031 562 1037

SPCA Durban & Coastal - 031 579 6500

Monkey Helpline - 082 659 4711

Deceased Animal Removal - 031 311 8809

Umhlanga UIP - 087 365 3700

Marshall Security - 086 162 7732

Blue Security - 031 717 5000



WEBSITE

Coming Soon.....

This February

We are pleased to advise the final stages of the Hawaan Forest Estate website are in progress.

POACHERS



Fauna and security monitoring was achieved by setting up trail cameras. One of the trail cameras had picked up a poacher during early January. This mobilised Marshall security who conducted risk assessments and also brought in their canine dog unit. The camera traps have now, in part, been handed over to a member of Marshall Security. Allister Starke has been training him during January and will work closely with Marshall in support on this.

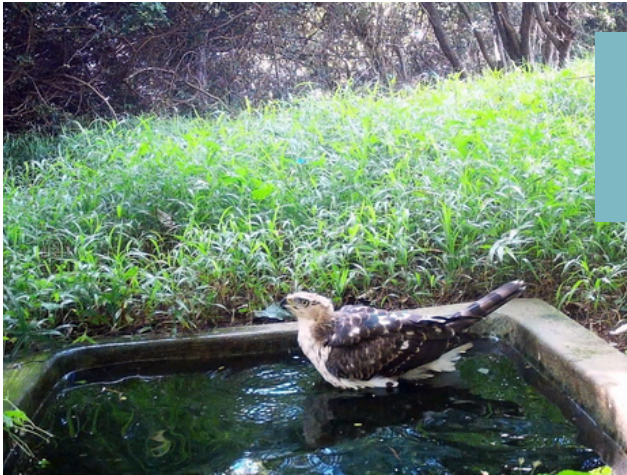
BEMBICINI

On the grassland trail were colony of sand wasps (Bembicini). Unlike the ground nesting bees, these guys predate host specific flies (diptera) which they hunt and feed to the developing larvae with the chamber of the ground nest.



CAMERA OBSERVATION JANUARY 2022

Due to the heat in January the most notable camera trap observations for January 2022 focused on the water trough at Bushshrike trail. An exciting observation was a juvenile crowned eagle having a drink and cooling off in the water, and many others.



Crested Guinea Fowl

Wood Owl



Female Bushbuck

An interesting insect observation in the forest during January has been of Geometrid moth larvae (looper caterpillars) defoliating forest fever berry (Croton sylvaticus). In their hundreds, these larvae, if they have survived being eaten by birds such as Forest weavers, drop to the forest floor. They then attempt to escape other insect predators such as pugnacious ants, and one can hear them moving through the leaf litter!!

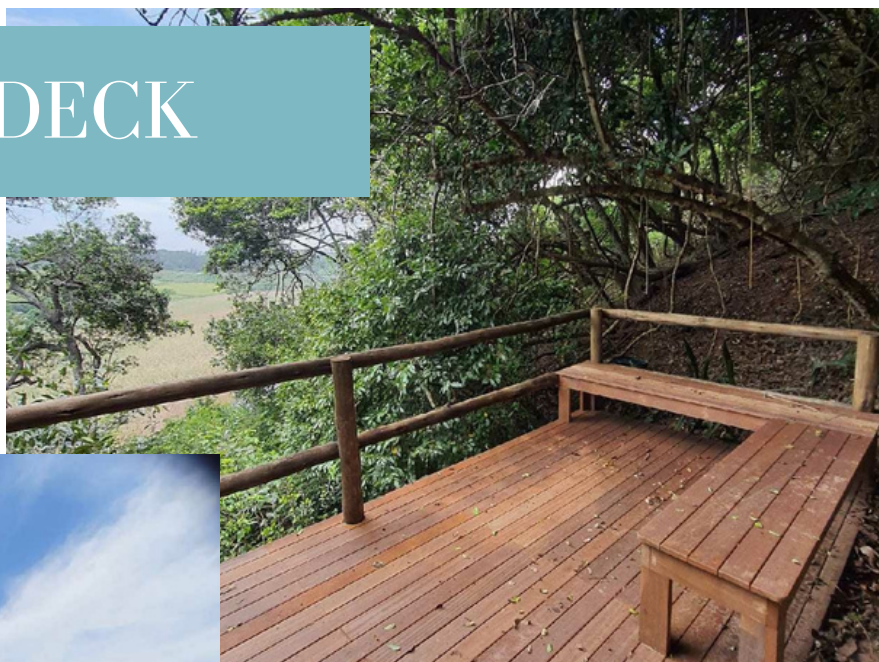
CONSERVATION TRUST TRAILS



Guests/Visitors are to present their Driver's License

LOOKOUT DECK

Viewing platform has been erected overlooking the Ohlanga Lagoon and out to sea beyond the bridge found at the end of Francolin trail.



HADEDA LOOP TRAIL



A table and benches has also been placed at the upper grassland view site under the shade of a Duiker-Berry tree. This provides a very pleasant refuge for members of the HCT staff who often work in very hot conditions in the open grassland.

We urge everyone to take advantage of these new amenities whether it be for a morning coffee break or an afternoon sundowner. It's sure to be a pleasure enhancing outing in this very special nature reserve.