



Solar Applications

The HOA has received many enquiries regarding Solar installation.

The HOA guidelines are provided as a result of a desire for objectivity and are to be used as an aid to determine allowable installations on the estate. The intention of the definitions is to create installations in accordance with the guidelines while still allowing each residential home the option to become more energy efficient.

For more information, click on the links below for the criteria required for a successful submission and legal suggestions.

Links:

[Solar Application](#)
[Legal Suggestions](#)

Site Updates:

All the Developer sites have now been sold.

There are currently eight sites under construction, this includes two new builds that started construction towards the end of 2022.

Two sites have completed construction since December 2022.

Current vacant sites are fifteen.

"In terms of the Conduct Rules"

In order to procure compliance with the general nature and amenity of the Estate, some form of pattern and order based upon the overall plan, has to be observed in order to maintain the desired style and ambience of this unique Estate.

The Architectural Design, Garden Landscaping controls and Environmental Management are used holistically to ensure that the Estate is developed in the best possible way and these tools are used to ensure certain parameters within which all Members must conform.

Every alteration to a building, attachment to a building (plaque, awnings, air conditioning units etc.) erection of, or alteration to fencing/garden walls etc., must also have written permission from the HOA.

It is the Members' responsibility to check with the HOA that they are in possession of the current edition of these controls and rules before commencing with any development within the boundaries of their property.

Link: [Conduct Rules](#)

Note: If you require any further information, please email the HOA office.



New Team Leader

Lydia Zweni
16 years' service
at Hawaan Forest Estate

Lydia Zweni has been appointed as the new Supervisor/ Team leader for the HOA Landscape Team. She has worked at Hawaan since 03 May 2006. She looks forward to making sure she fulfils her position as a new supervisor and promises to work hard with a good landscape team.

Lydia got promoted because of her knowledge of Hawaan and her willingness to follow instructions. We call her the walking Dictionary of Hawaan Landscaping because when she is asked about anything pertaining to Hawaan and gardening she always knows. We wish her the best of luck in meeting all the Estate requirements.

VISIT OUR WEBSITE:

<https://hawaanforestate.co.za/>

Did you know?

All staff who work in homes on the Estate including domestics, gardeners, drivers and caregivers can be registered on the My Estate Life App. Residents can select the specific days your staff work and will also receive a notification when staff are signed in and out of the Estate.

How to Register your staff:

Go to MEL ---> Click on " My Home" ----> Select " Staff"
---> And add on your staff by selecting the "+"

Note:

Applications and fees for new staff still apply.



Photo by John Gatherer

CONSERVATION TRUST

The HOA has officially taken transfer of the Conservation Trust Land.

We would like to welcome the two new Trustees representing the HOA, Trisha Govender and Leigh Mann. Both come with great expertise, which will benefit all Residents and the Conservation Trust.

Trisha has been aiding the Trust in the Forest camera operations.

Leigh will be starting a Bird Watching club.... Watch this space for more information.

Allisters Monthly Reports & Camera Trap Footage



RECENT ELECTRICAL ISSUES

Power Trips

Python Place & Parts of Hawaan Drive

On the 18th of January 2023, the Residents of Python Place and parts of Hawaan Drive experienced a power trip after the load shedding took place that afternoon. From the reports received the power trip affected only certain phases to their homes.

The HOA electrician was contacted and informed Security that the issue needed to be logged with eThekweni Municipality (ref: 5654124).

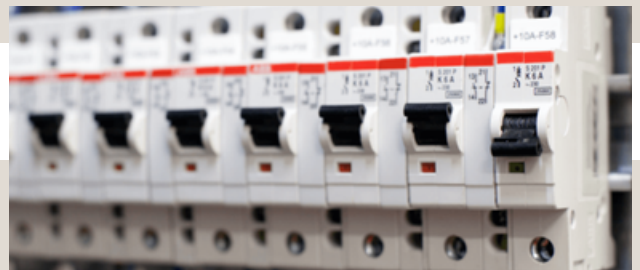
On the 19th of January 2023, Simphiwe from eThekweni Municipality was onsite to resolve the issue. Regrettably, the power tripped again a short while later.

The HOA was advised by Simphiwe that the issue needed to be relogged for another electrician to be dispatched. With the aid of the affected Residents, we were able to log a few complaints with the eThekweni Municipality.

The issue was resolved when the Electrician from the Municipality replaced 2 breakers with a higher amp.

On the 15th of February 2023, the residents in the lower end of Python Place were affected again. With the assistance of the Electrical Engineer and HOA Electrician the breaker was replaced.

We are happy to confirm no further issues were experienced.



Mongoose Place & Parts of Hawaan Drive

Due to the excessive heat experienced on the 20th of February 2023, the Residents of Mongoose Place and parts of Hawaan Drive were affected by a power trip at MSS2.

The HOA electrician was contacted immediately. Security and the HOA office assisted in establishing the homes and the Mini Substation affected. The issue was resolved, and the electrician further investigated and found that the Meter Panels were abnormally overheated, due to the heat and overload.